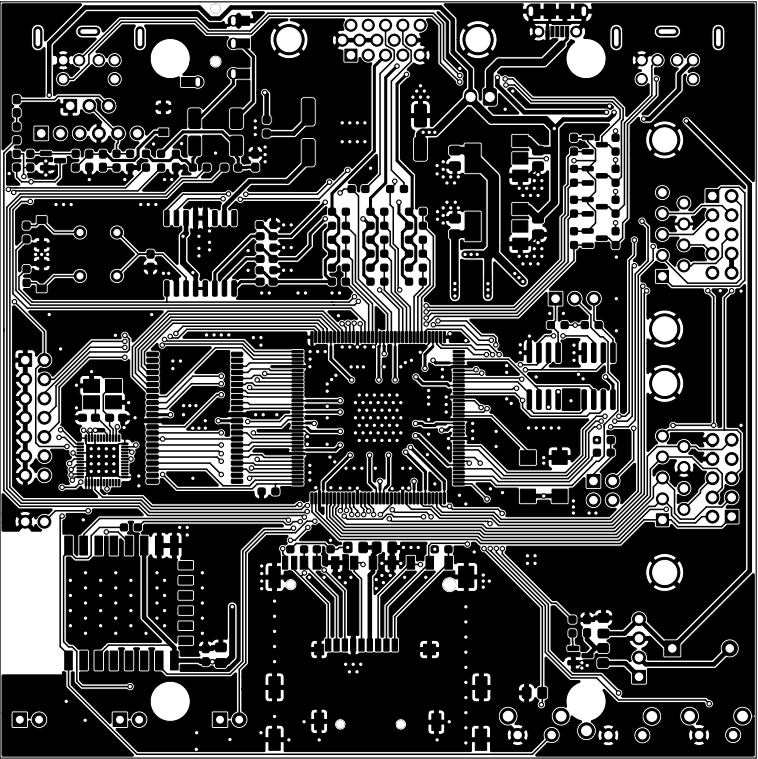
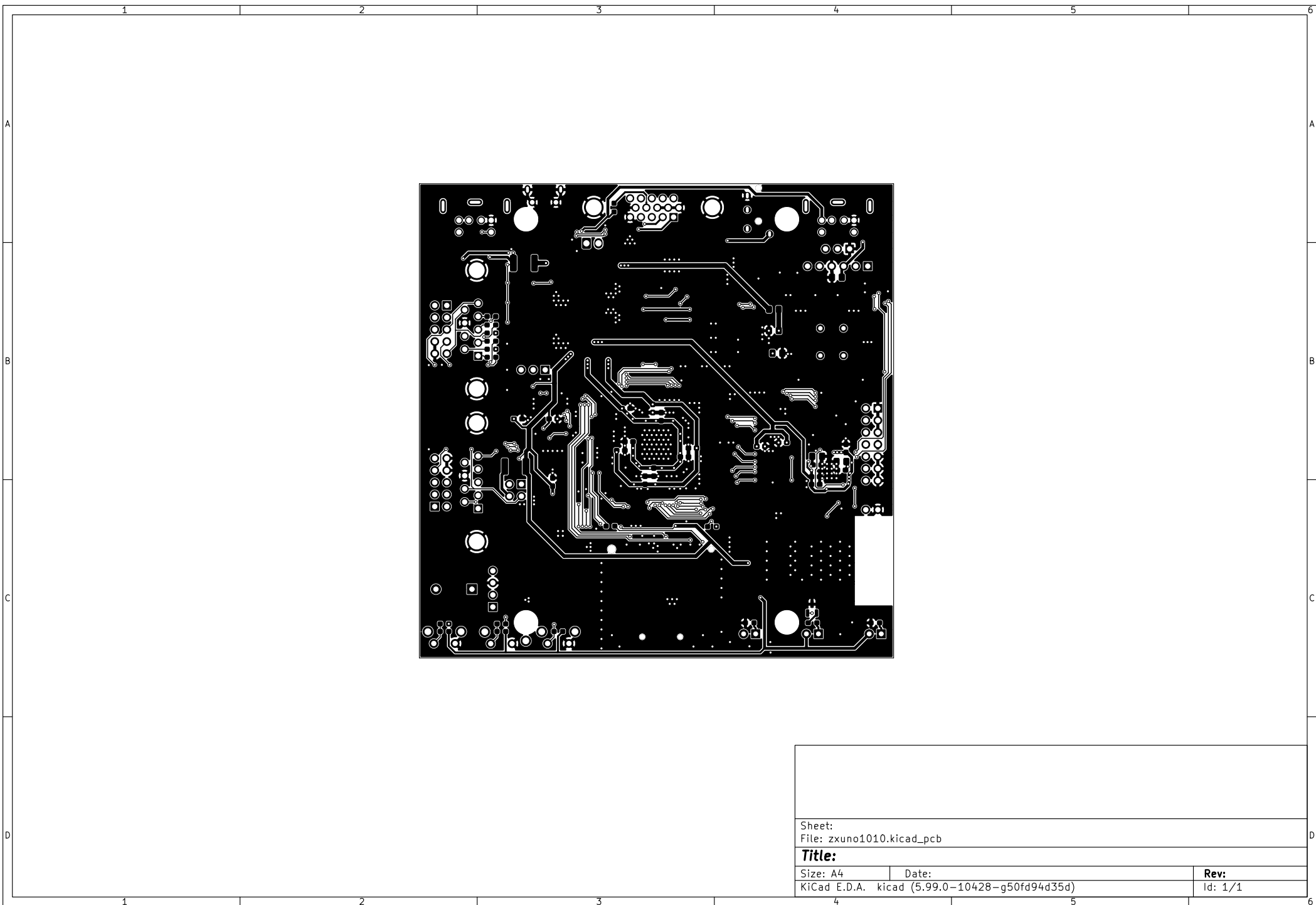


Sheet:		
File: zxuno1010.kicad_pcb		
Title:		
Size: A4	Date:	Rev:
KiCad E.D.A. kicad (5.99.0-10428-g50fd94d35d)		Id: 1/1



Sheet:		
File: zxuno1010.kicad_pcb		
Title:		
Size: A4	Date:	Rev:
KiCad E.D.A. kicad (5.99.0-10428-g50fd94d35d)		Id: 1/1



Sheet:		
File: zxuno1010.kicad_pcb		
Title:		
Size: A4	Date:	Rev:
KiCad E.D.A. kicad (5.99.0-10428-g50fd94d35d)		Id: 1/1

Designator	Package	Designation	Quantity
C11,C10	C_0603_1608Metric_Pad1.08x0.95mm_HandSolder	22p	2
C12	CP_Elec_6.3x7.7	220u	1
C13	C_0603_1608Metric_Pad1.08x0.95mm_HandSolder	4.3p	1
C15,C14,C39,C6,C5,C7,C3,C38,C32,C42,C34,C40,C33,C48,C44,C8,C45,C41,C46,C43,C49	C_0603_1608Metric_Pad1.08x0.95mm_HandSolder	100n	21
C18,C19	CP_Elec_4x5.4	10u	2
C20,C16,C2,C21	C_0603_1608Metric_Pad1.08x0.95mm_HandSolder	10n	4
C25,C29,C1,C17,C36,C23,C22,C24,C30,C9,C28,C27,C4	C_0805_2012Metric_Pad1.18x1.45mm_HandSolder	10u	13
C26	CP_Elec_5x5.9	47u	1
C35,C31,C47,C37	C_0603_1608Metric_Pad1.08x0.95mm_HandSolder	1u	4
D1	LED_D3.0mm_Horizontal_O1.27mm_Z6.0mm	LED_Red	1
D2	LED_D3.0mm_Horizontal_O1.27mm_Z6.0mm	LED_Blue	1
D3	LED_D3.0mm_Horizontal_O1.27mm_Z6.0mm	LED_Green	1
D4,D6,D5	D_SOD-123	1N4148W	3
F1	Fuse_1812_4532Metric_Pad1.30x3.40mm_HandSolder	0.5A	1
F2	Fuse_1812_4532Metric_Pad1.30x3.40mm_HandSolder	0.2A	1
H1,H2,H3,H4	MountingHole_3.2mm_M3_dk5.2mm_Mask	Screw M3 dk=5mm L=4mm	4
J10	PinHeader_1x03_P2.54mm_Vertical	PJ-392	1
J11	SD_TE_2041021-mod	TE 041021-4	1
J12	GCT-MEM2055-00-190-01-A	MEM2055-00-190-01-A	1
J13	PinHeader_1x06_P2.54mm_Vertical	MH-M18	1
J14	PJ-320A_D	PJ-320	1
J15	PinHeader_2x07_P2.54mm_Vertical	Conn_02x07_Odd_Even	1
J16	USB_Micro-B_Molex-105017-0001	USB_B_Micro	1
J1,J2	MINI_DIN_6_33PRIMARY	Mini-DIN-6	2
J3	PinHeader_1x04_P2.54mm_Vertical	Conn_01x04	1
J5,J6	PinHeader_2x05_P2.54mm_Vertical	Conn_02x05_Odd_Even	2
J7	DSUB-15-HD_Female_Horizontal_P2.29x1.98mm_EdgePinOffset3.03mm_Housed_MountingHolesOffset4.94mm	DB15_Female_HighDensity_MountingHoles	1
J8,J4	DSUB-9_Male_Horizontal_P2.77x2.84mm_EdgePinOffset4.94mm_Housed_MountingHolesOffset7.48mm	DB9-M	2
J9	PinHeader_2x02_P2.54mm_Vertical	Jumper	1
JP1	PinHeader_1x02_P2.54mm_Vertical	Jumper	1
JP2	PinHeader_1x03_P2.54mm_Vertical	Jumper	1
L1,L2	L_0805_2012Metric_Pad1.15x1.40mm_HandSolder	1u	2
LS1	Buzzer_12x9.5RM7.6	Speaker	1
Q3,Q1,Q4,Q2	SOT-23	BSS138	4
Q5	SOT-23	BC856	1
Q6,Q7	SOT-23	BC817	2
R20	R_0805_2012Metric_Pad1.20x1.40mm_HandSolder	33	1
R23	R_0603_1608Metric_Pad0.98x0.95mm_HandSolder	0	1
R26,R21,R54,R34,R50,R30,R47	R_0603_1608Metric_Pad0.98x0.95mm_HandSolder	1k	7
R32,R17,R25,R38,R14,R35,R15,R40,R16,R39,R28,R22,R43,R18,R36,R73,R70,R31,R51,R71,R55,R72,R48,R27	R_0603_1608Metric_Pad0.98x0.95mm_HandSolder	220	15
R42,R41	R_0603_1608Metric_Pad0.98x0.95mm_HandSolder	2k	10
R49,R24,R29,R52,R33,R46	R_0603_1608Metric_Pad0.98x0.95mm_HandSolder	100	2
R57,R56,R58,R53	R_0603_1608Metric_Pad0.98x0.95mm_HandSolder	510	6
R63	R_0603_1608Metric_Pad0.98x0.95mm_HandSolder	75	4
R64,R67,R68,R37,R59,R69,R65,R60,R62,R61	R_0603_1608Metric_Pad0.98x0.95mm_HandSolder	470k	1
R66	R_0603_1608Metric_Pad0.98x0.95mm_HandSolder	10k	10
R7,R9,R13,R10,R45,R5,R4,R12,R11,R44,R6,R1,R3,R2	R_0603_1608Metric_Pad0.98x0.95mm_HandSolder	470	1
SW3,SW1,SW2	SW_Tactile_SPST_Angled_PTS645Vx58-2LFS	4.7k	14
SW4	Molex_KK-254_AE-6410-02A_1x02_P2.54mm_Vertical	SW_Push	3
U1	ESP-12E	PB05A	1
		ESP-12E	1

U2	TSOP-II-44_10.16x18.41mm_P0.8mm	IS61WV20488BLL-10	1
U3	LQFP-144_20x20mm_P0.5mm	XC6SLX9-TQG144	1
U4,U5	SOIC-8_5.23x5.23mm_P1.27mm-LONG	W25Q128	2
U6	QFN-48-1EP_6x6mm_P0.4mm_EP4.2x4.2mm	SAM2695	1
U7	SOIC-16W_7.5x10.3mm_P1.27mm	AD724	1
U8	SOT-223-3_TabPin2	1117-3.3	1
U9	SOT-223-3_TabPin2	1117-1.2	1
X1	Oscillator_SMD_SeikoEpson_SG8002CA-4Pin_7.0x5.0mm	50 MHz	1
Y1	Crystal_SMD_SeikoEpson_TSX3225-4Pin_3.2x2.5mm_HandSoldering	12 MHz	1
Y2	Crystal_HC49-U_Vertical	3.58 MHz	1
Y3	Crystal_HC49-U_Vertical	4.43 MHz	1