

Layers: 2  
 Dimensions: 85.1x140mm  
 Thickness: 1.6mm

Min clearance: 0.2mm  
 Min track: 0.25mm  
 Min hole: 0.4mm  
 Min annular ring: 0.2mm

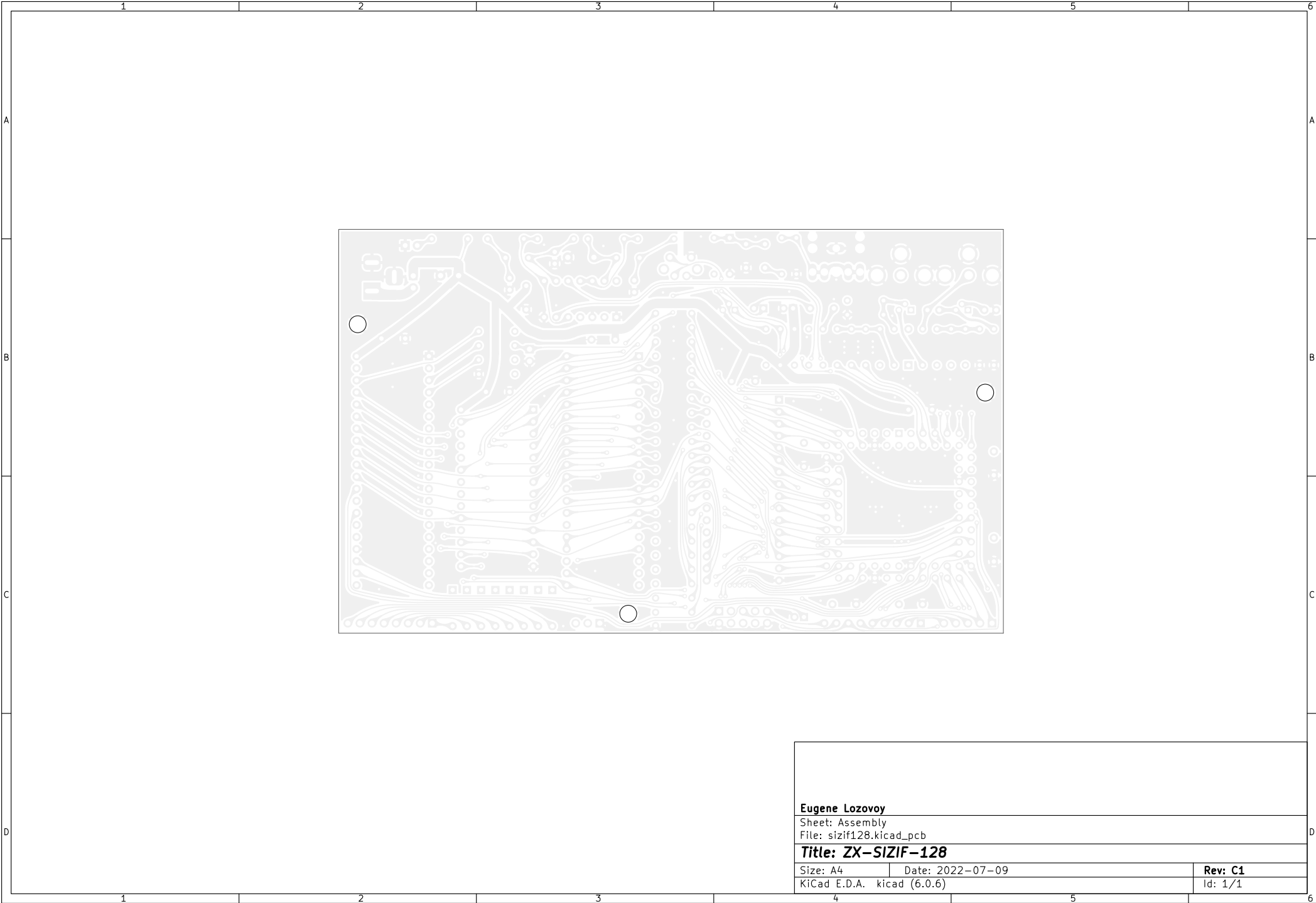
**Eugene Lozovoy**

Sheet: Assembly  
 File: sizif128.kicad\_pcb

**Title: ZX-SIZIF-128**

Size: A4  
 Date: 2022-07-09  
 KiCad E.D.A. kicad (6.0.6)

**Rev: C1**  
 Id: 1/1



Eugene Lozovoy

Sheet: Assembly

File: sizif128.kicad\_pcb

**Title: ZX-SIZIF-128**

Size: A4

Date: 2022-07-09

Rev: C1

KiCad E.D.A. kicad (6.0.6)

Id: 1/1

Designator	Package	Value	Quantity
C1, C7	CP_Radial_D5.0mm_P2.00mm	10u	2
C2, C3, C4, C5, C8, C9, C10, C11, C12, C13, C14, C15, C23	C_Disc_D7.0mm_W2.5mm_P5.00mm	100n	13
C6	CP_Radial_D10.0mm_P3.80mm	470u	1
C16	C_Disc_D7.0mm_W2.5mm_P5.00mm	10n	1
C17	C_Disc_D3.8mm_W2.6mm_P2.50mm	470p	1
C18, C19	C_Disc_D3.8mm_W2.6mm_P2.50mm	27p	2
C20	C_Trim_D6.3mm_P5.50mm	30p	1
C21	C_Disc_D3.8mm_W2.6mm_P2.50mm	15p	1
C22	C_Disc_D3.8mm_W2.6mm_P2.50mm	100p	1
C24	CP_Radial_D5.0mm_P2.00mm	100u	1
D1, D2, D4, D5, D6, D7, D8, D9, D10	D_DO-35_SOD27_P7.62mm_Horizontal	BAT85	9
D3	D_DO-35_SOD27_P7.62mm_Horizontal	1N4148	1
D11	LED_D4.0mm	LED	1
J1, J2	CUI_RCJ-013	RCJ-013	2
J3	BarrelJack_Horizontal	DS-210	1
J4	SWITCHCRAFT_35RAPC4BHN2	PJ307	1
J5	PinSocket_1x08_P2.54mm_Vertical	Conn_01x08	1
J6	PinSocket_1x05_P2.54mm_Vertical	Conn_01x05	1
J7	PinHeader_2x05_P2.54mm_Vertical	Conn_02x05	1
J8, J9	PinHeader_1x02_P2.54mm_Vertical	Conn_01x02	2
J10	PinSocket_1x02_P2.54mm_Vertical	Conn_01x02_Female	1
JP1	PinHeader_1x03_P2.54mm_Vertical	Jumper_3_Bridged12	1
Q1, Q2, Q3	TO-92	BC549B	3
R1, R2, R3, R5, R8, R9, R10, R11, R12, R13, R14, R15, R16, R17, R18, R19, R20, R21, R22, R23, R24, R25, R27, R28, R29, R30, R43, R44	R_Axial_DIN0204_L3.6mm_D1.6mm_P7.62mm_Horizontal	1k	28
R4, R35, R54	R_Axial_DIN0204_L3.6mm_D1.6mm_P7.62mm_Horizontal	470	3
R6, R41, R49	R_Axial_DIN0204_L3.6mm_D1.6mm_P7.62mm_Horizontal	2.4k	3
R7, R40, R50	R_Axial_DIN0204_L3.6mm_D1.6mm_P7.62mm_Horizontal	4.7k	3
R31, R36, R37, R38, R42, R53	R_Axial_DIN0204_L3.6mm_D1.6mm_P7.62mm_Horizontal	10k	6
R32	R_Axial_DIN0204_L3.6mm_D1.6mm_P7.62mm_Horizontal	470k	1
R33, R34	R_Axial_DIN0204_L3.6mm_D1.6mm_P7.62mm_Horizontal	1M	2
R39	R_Axial_DIN0204_L3.6mm_D1.6mm_P7.62mm_Horizontal	18k	1
R45	R_Axial_DIN0204_L3.6mm_D1.6mm_P7.62mm_Horizontal	6.8k	1
R46	R_Axial_DIN0204_L3.6mm_D1.6mm_P7.62mm_Horizontal	15k	1
R47	R_Axial_DIN0204_L3.6mm_D1.6mm_P7.62mm_Horizontal	68	1
R48, R51	R_Axial_DIN0204_L3.6mm_D1.6mm_P7.62mm_Horizontal	1.2k	2
R52	R_Axial_DIN0204_L3.6mm_D1.6mm_P7.62mm_Horizontal	82	1
RN1	R_Array_SIP9	4.7k	1
SW1	SW_Tactile_SPST_Angled_PTS645Vx83-2LFS	SW_Push	1
U1	DIP-28_W15.24mm_Socket	27C512	1
U2	DIP-40_W15.24mm_Socket	YM2149	1
U3	DIP-40_W15.24mm_Socket	Z84C0008PEC	1
U4	PLCC-84_THT-Socket	EPM7128SLC84-15N	1
U5	DIP-32_W15.24mm_Socket	628128	1
U6	DIP-14_W7.62mm_Socket	74HCU04	1
Y1	Crystal_HC49-U_Vertical	14MHz	1
Y2	Crystal_HC49-U_Vertical	28.375MHz	1