

Input: 15KHz RGB+CSync or RGB+HSync+VSync
Output: S-Video PAL

Sheet: /
File: rgb2svideo.kicad_sch

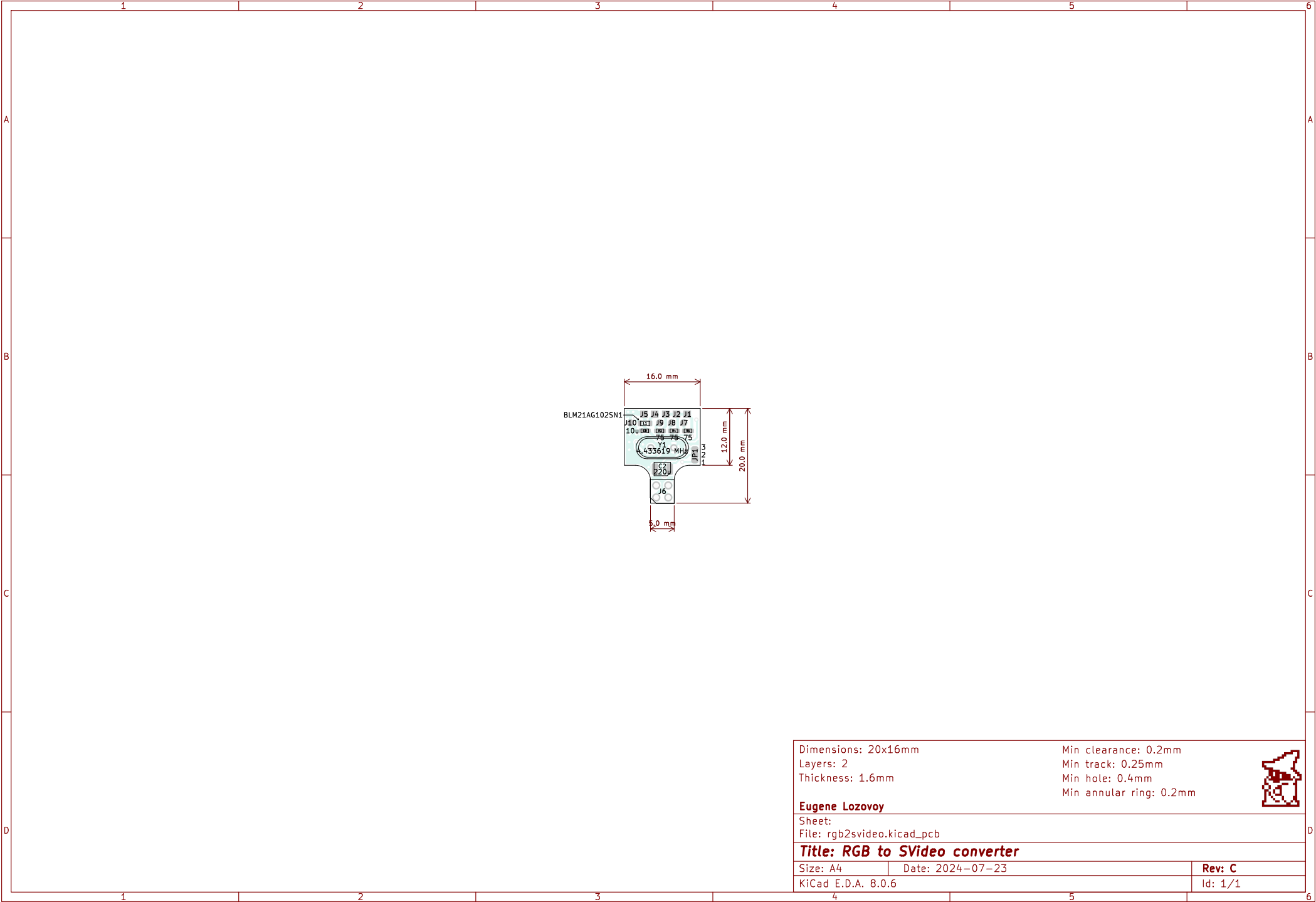
Title: RGB to SVideo converter


Size: A4 Date: 2024-07-23

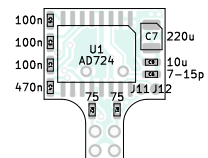
KiCad E.D.A. 8.0.6

Rev: C

Id: 1/1



Dimensions: 20x16mm		Min clearance: 0.2mm	
Layers: 2		Min track: 0.25mm	
Thickness: 1.6mm		Min hole: 0.4mm	
		Min annular ring: 0.2mm	
Eugene Lozovoy			
Sheet:			
File: rgb2svideo.kicad_pcb			
Title: RGB to SVideo converter			
Size: A4	Date: 2024-07-23		Rev: C
KiCad E.D.A. 8.0.6			Id: 1/1



Dimensions: 20x16mm
Layers: 2
Thickness: 1.6mm

Min clearance: 0.2mm
Min track: 0.25mm
Min hole: 0.4mm
Min annular ring: 0.2mm



Eugene Lozovoy

Sheet:

File: rgb2svideo.kicad_pcb

Title: RGB to SVideo converter

Size: A4

Date: 2024-07-23

KiCad E.D.A. 8.0.6

Rev: C

Id: 1/1

Bill Of Materials

References	Value	Footprint	Qty
C1 C3 C5	100n	Capacitor_SMD:C_0603_1608Metric	3
C2 C7	220u	Capacitor_Tantalum_SMD:CP_EIA-3528-12_Kemet-T	2
C4	470n	Capacitor_SMD:C_0603_1608Metric	1
C6	7-15p	Capacitor_SMD:C_0603_1608Metric	1
C8 C9	10u	Capacitor_SMD:C_0603_1608Metric	2
J6	Conn_02x02_Odd_Even	Connector_PinHeader_2.54mm:PinHeader_2x02_P2.54mm_Vertical	1
L1	BLM21AG102SN1	Inductor_SMD:L_0805_2012Metric	1
N1	D-SUB-15-HD		1
R1 R2 R3 R4 R5	75	Resistor_SMD:R_0603_1608Metric	5
U1	AD724	Package_SO:SOIC-16W_7.5x10.3mm_P1.27mm	1
Y1	4.433619 MHz	Crystal:Crystal_HC49-4H_Vertical	1

