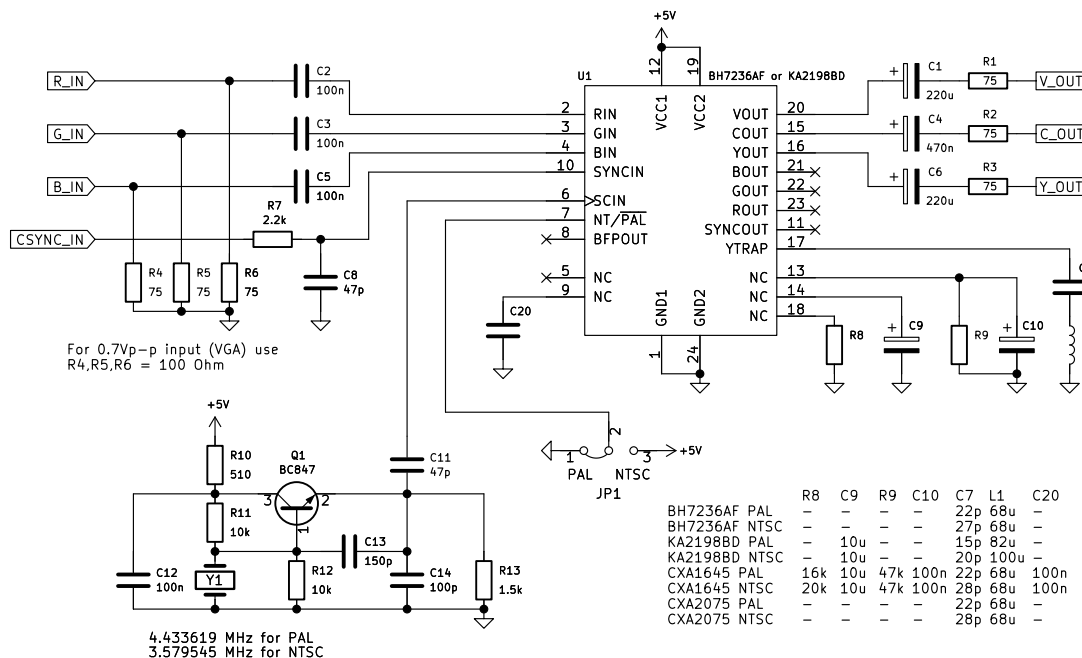
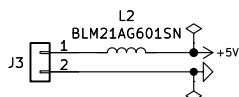
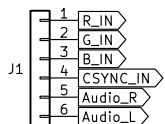
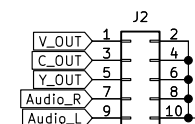


#N1
Szomk AK-S-71 43*22*11



	R8	C9	R9	C10	C7	L1	C20
BH7236AF PAL	-	-	-	-	22p	68u	-
BH7236AF NTSC	-	-	-	-	27p	68u	-
KA2198BD PAL	-	10u	-	-	15p	82u	-
KA2198BD NTSC	-	10u	-	-	20p	100u	-
CXA1645 PAL	16k	10u	47k	100n	22p	68u	100n
CXA1645 NTSC	20k	10u	47k	100n	28p	68u	100n
CXA2075 PAL	-	-	-	-	22p	68u	-
CXA2075 NTSC	-	-	-	-	28p	68u	-



Sheet: /
File: rgb2svideo.kicad_sch

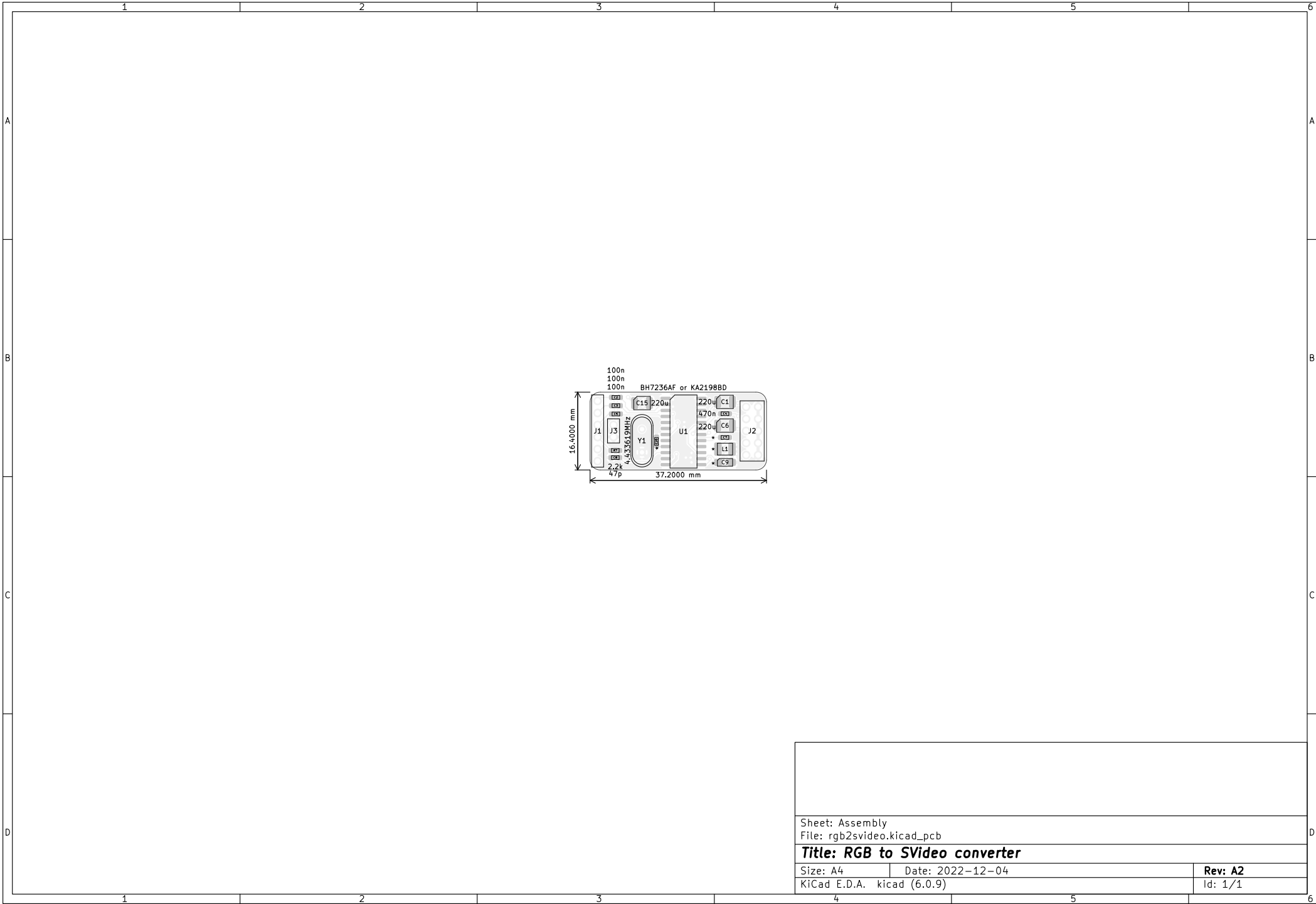
Title: RGB to SVideo converter

Size: A4 Date: 2022-12-04

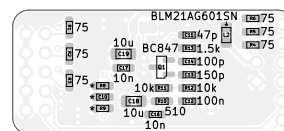
KiCad E.D.A. kicad (6.0.9)

Rev: A2

Id: 1/1



Sheet: Assembly		
File: rgb2svideo.kicad_pcb		
Title: RGB to SVideo converter		
Size: A4	Date: 2022-12-04	Rev: A2
KiCad E.D.A. kicad (6.0.9)		Id: 1/1



Designator	Package	Value	Quantity
C1, C6, C15	CP_EIA-3528-12_Kemet-T	220u	3
C2, C3, C5, C12	C_0603_1608Metric_Pad1.08x0.95mm_HandSolder	100n	4
C4	C_0603_1608Metric_Pad1.08x0.95mm_HandSolder	470n	1
C7, C10, C20	C_0603_1608Metric_Pad1.08x0.95mm_HandSolder	*	3
C8, C11	C_0603_1608Metric_Pad1.08x0.95mm_HandSolder	47p	2
C9	CP_EIA-3216-18_Kemet-A_Pad1.58x1.35mm_HandSolder	*	1
C13	C_0603_1608Metric_Pad1.08x0.95mm_HandSolder	150p	1
C14	C_0603_1608Metric_Pad1.08x0.95mm_HandSolder	100p	1
C16, C17	C_0603_1608Metric_Pad1.08x0.95mm_HandSolder	10n	2
C18, C19	C_0805_2012Metric_Pad1.18x1.45mm_HandSolder	10u	2
L1	L_1210_3225Metric_Pad1.42x2.65mm_HandSolder	*	1
L2	L_0805_2012Metric_Pad1.15x1.40mm_HandSolder	BLM21AG601SN	1
Q1	SOT-23	BC847	1
R1, R2, R3, R4, R5, R6	R_0603_1608Metric_Pad0.98x0.95mm_HandSolder	75	6
R7	R_0603_1608Metric_Pad0.98x0.95mm_HandSolder	2.2k	1
R8, R9	R_0603_1608Metric_Pad0.98x0.95mm_HandSolder	*	2
R10	R_0603_1608Metric_Pad0.98x0.95mm_HandSolder	510	1
R11, R12	R_0603_1608Metric_Pad0.98x0.95mm_HandSolder	10k	2
R13	R_0603_1608Metric_Pad0.98x0.95mm_HandSolder	1.5k	1
U1	SOP-24_5.0x15.4mm_P1.27mm	BH7236AF or KA2198BD	1
Y1	Crystal_HC49-4H_Vertical	4.433619MHz	1

