

1 2 3 4 5 6

A

B

C

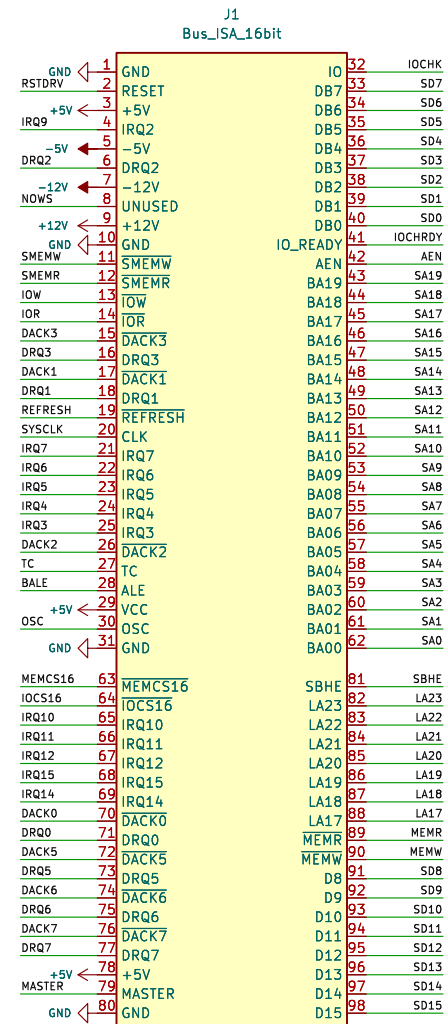
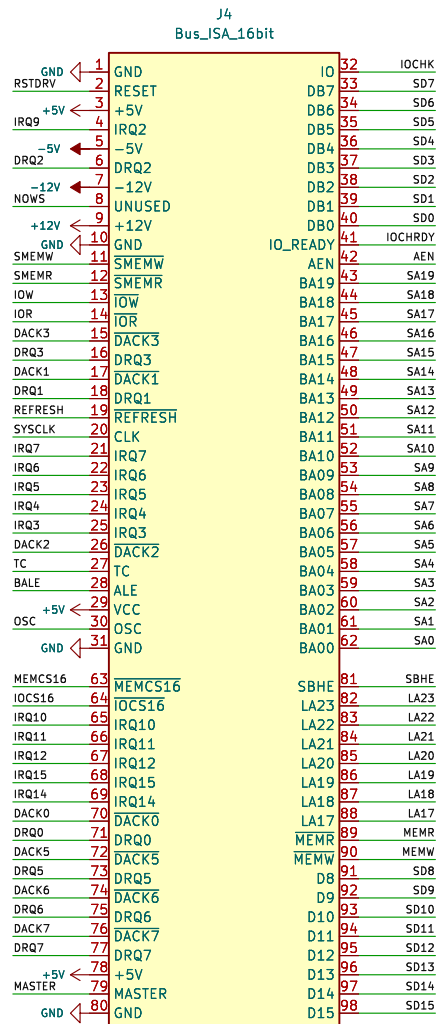
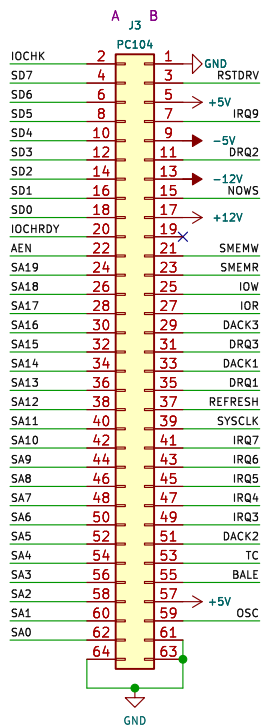
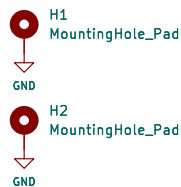
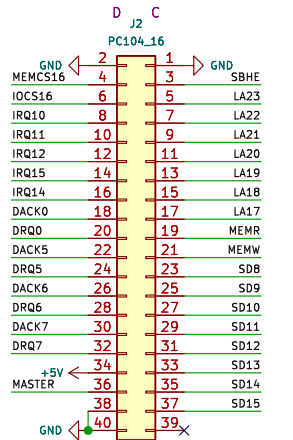
D

A

B

C

D



Eugene Lozovoy

Sheet: /
File: pc104_isa_adapter.kicad_sch

Title: PC104-ISA-ADAPTER

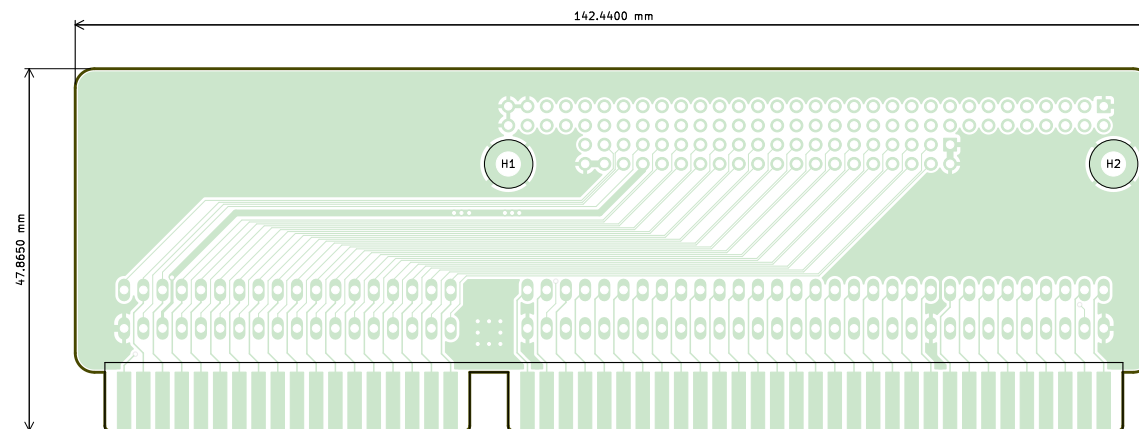
Size: A4 Date: 2022-09-11

KiCad E.D.A. kicad-cli 7.0.9

Rev: A

Id: 1/1





Layers: 2
Dimensions: 142.5x47.9mm
Thickness: 1.6mm
Min clearance: 0.127mm
Min track: 0.127mm
Min hole: 0.3mm
Min annular ring: 0.15mm

Eugene Lozovoy

Sheet:

File: pc104_isa_adapter.kicad_pcb

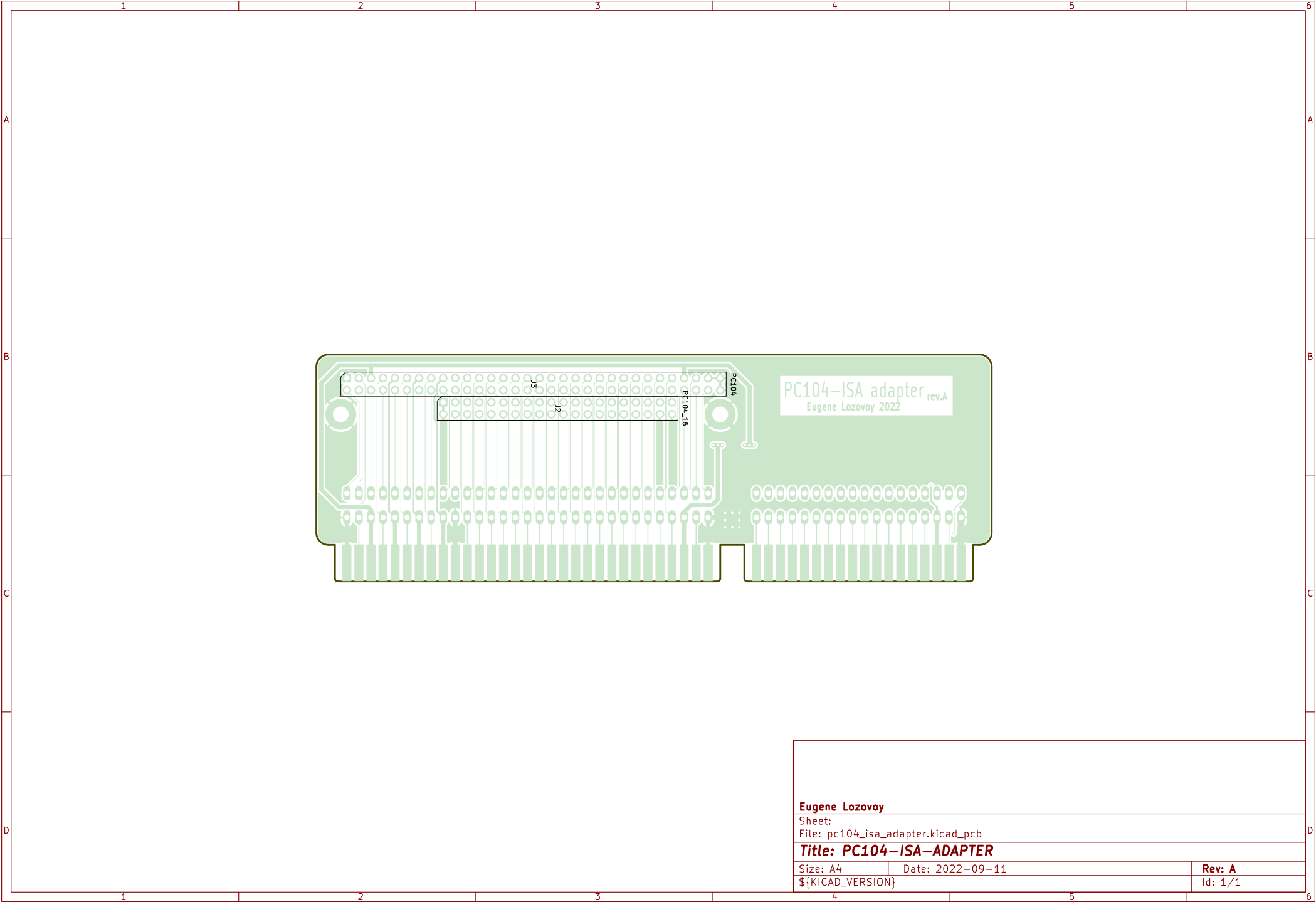
Title: PC104-ISA-ADAPTER

Size: A4 Date: 2022-09-11

\${KICAD_VERSION}

Rev: A

Id: 1/1



Eugene Lozovoy

Sheet:

File: pc104_isa_adapter.kicad_pcb

Title: PC104-ISA-ADAPTER

Size: A4

Date: 2022-09-11

Rev: A

\${KICAD_VERSION}

Id: 1/1

Bill Of Materials

| References | Value | Footprint | Qty |
|------------|----------|--|-----|
| J2 | PC104_16 | Connector_PinSocket_2.54mm:PinSocket_2x20_P2.54mm_Vertical | 1 |
| J3 | PC104 | Connector_PinSocket_2.54mm:PinSocket_2x32_P2.54mm_Vertical | 1 |

