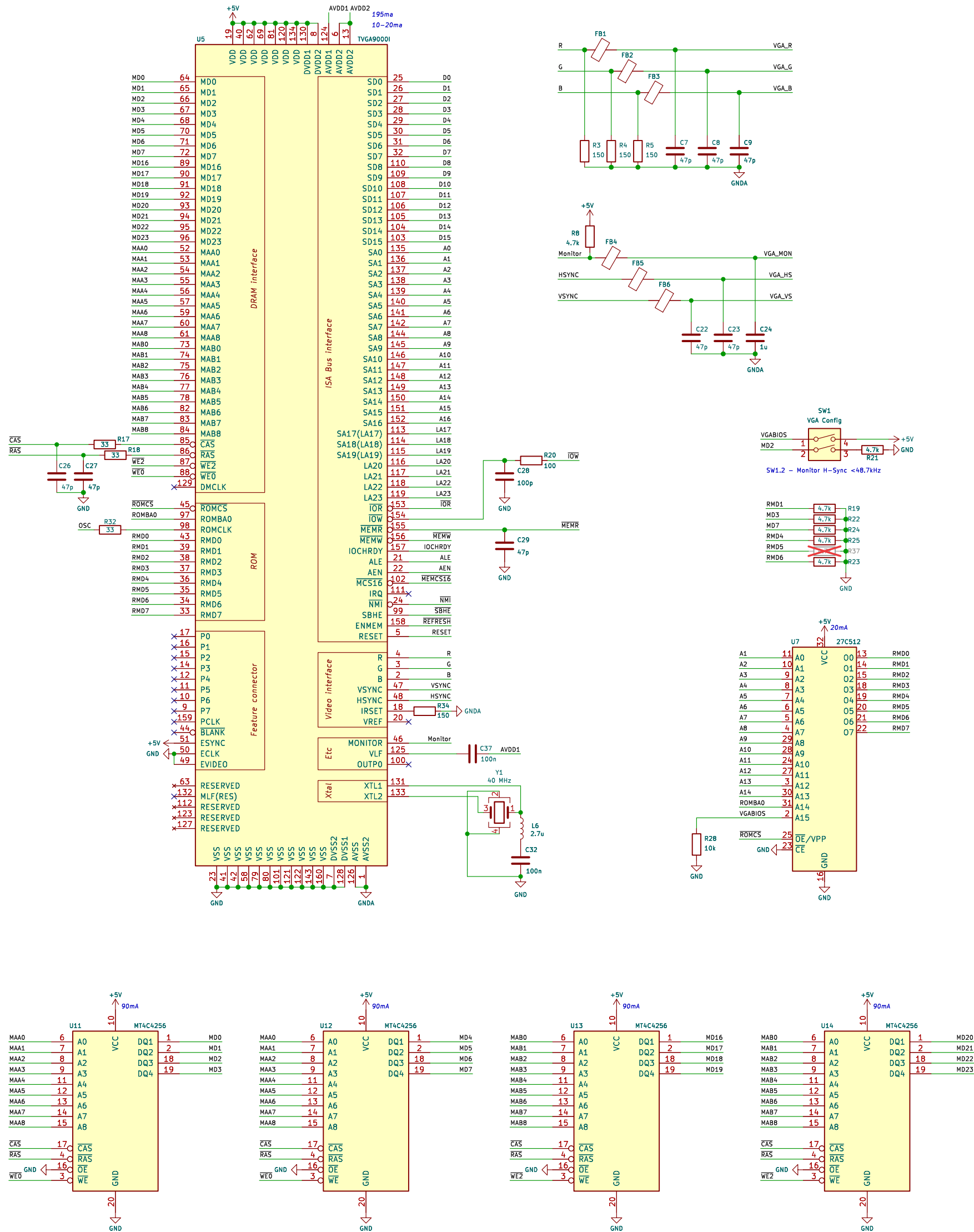
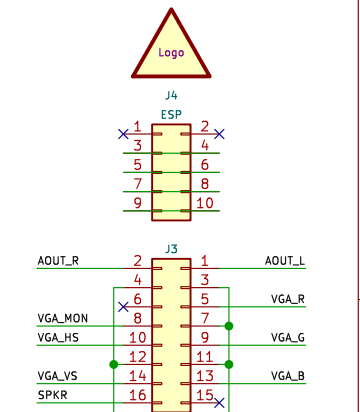
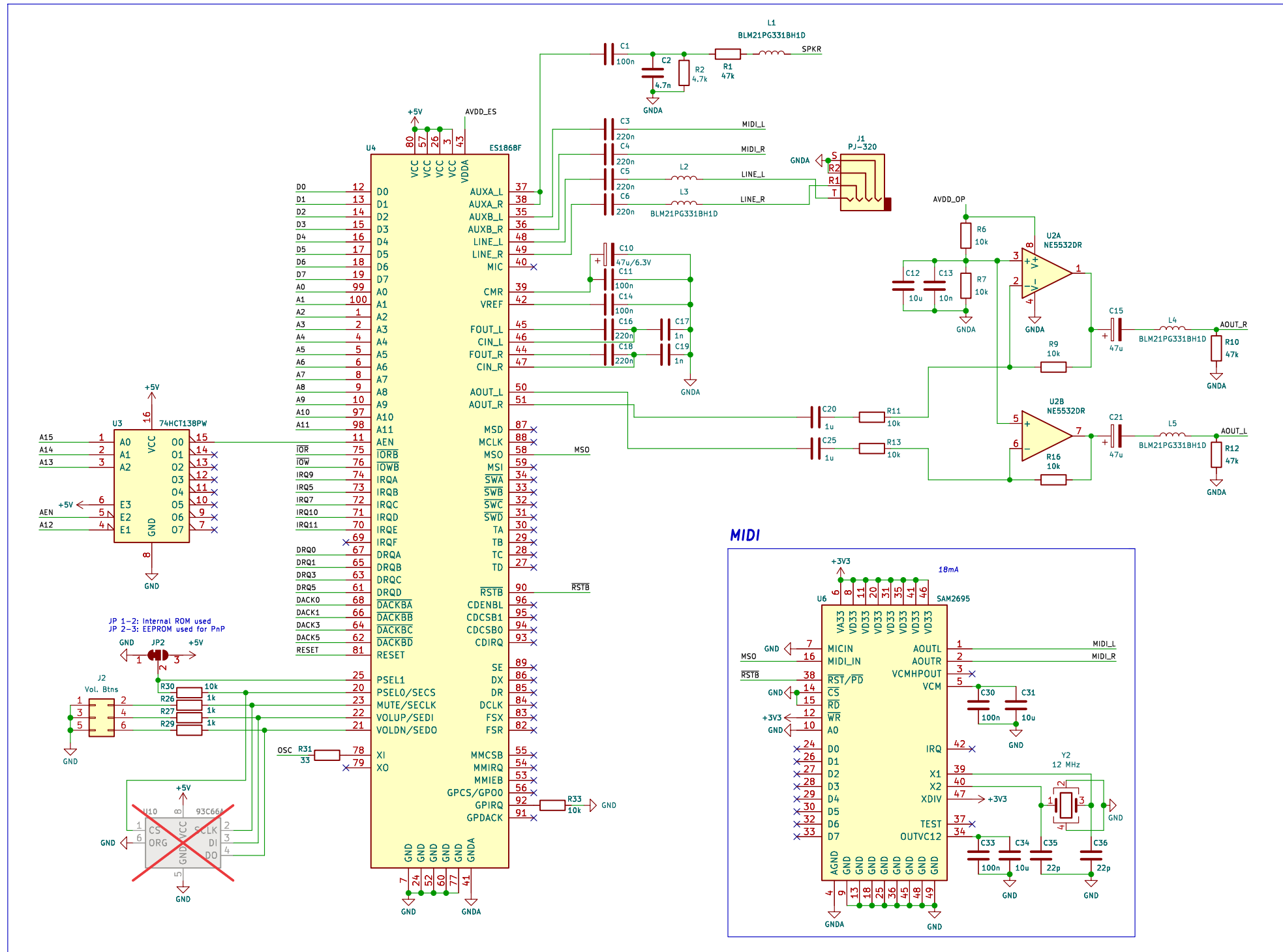


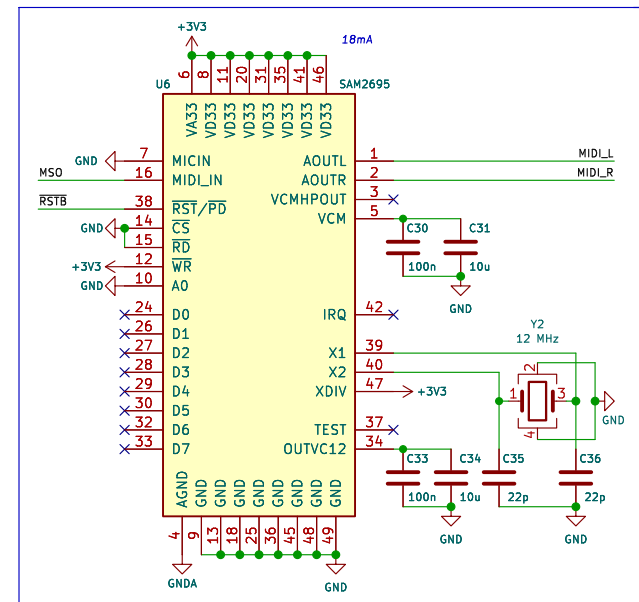
Video



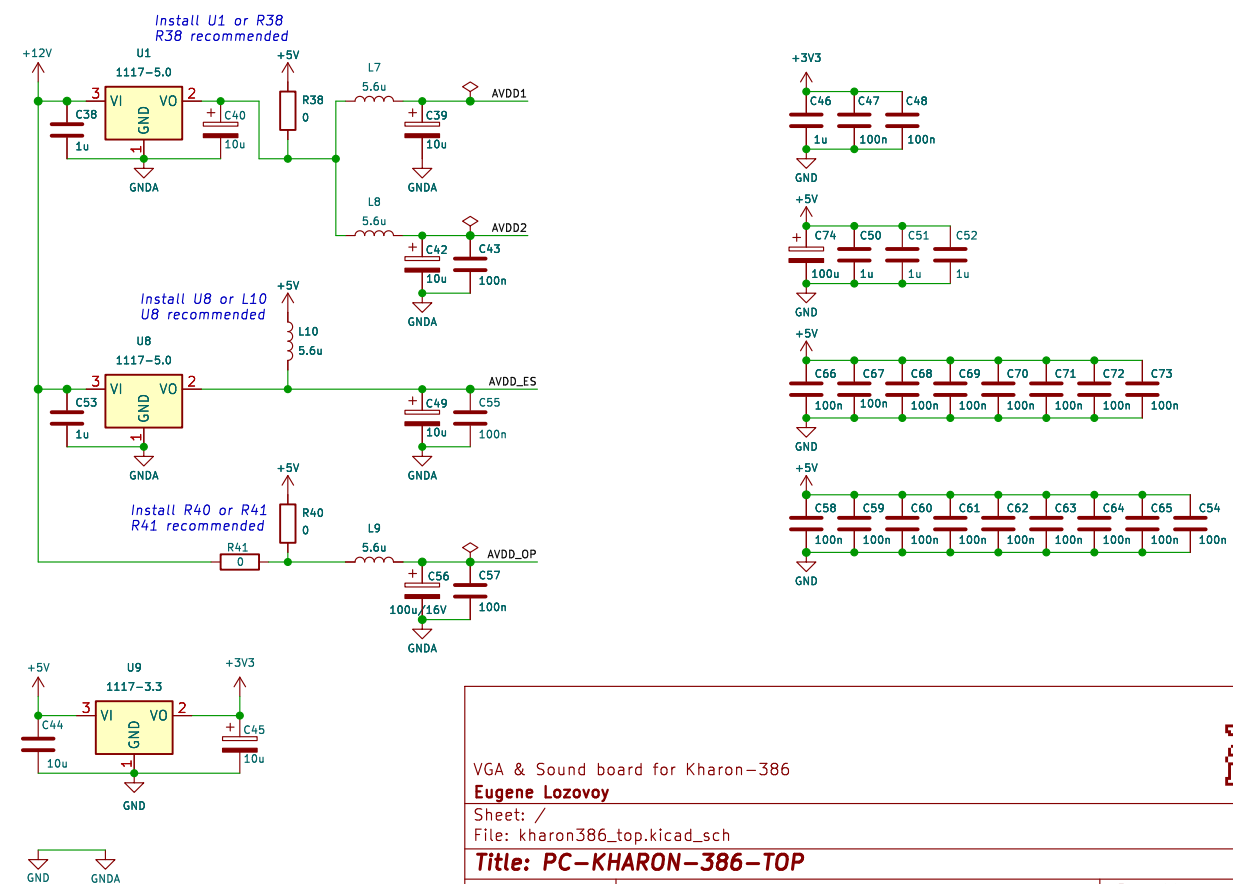
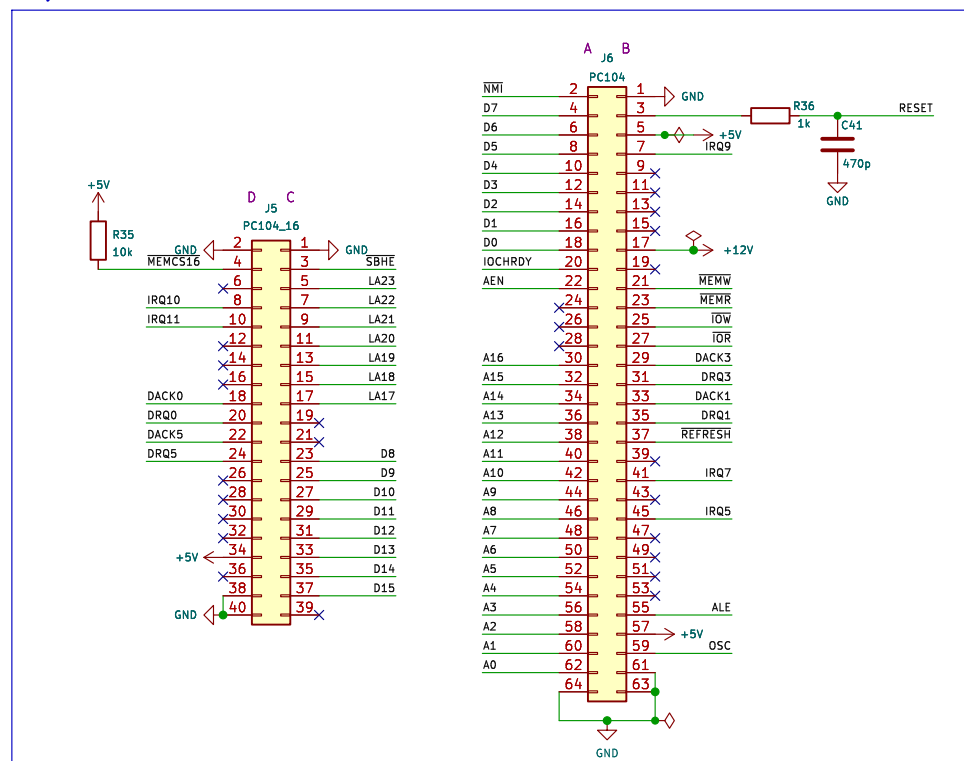
Sound



MIDI



PC/104



VGA & Sound board for Kharon-386

Eugene Lozovoy

Sheet: /

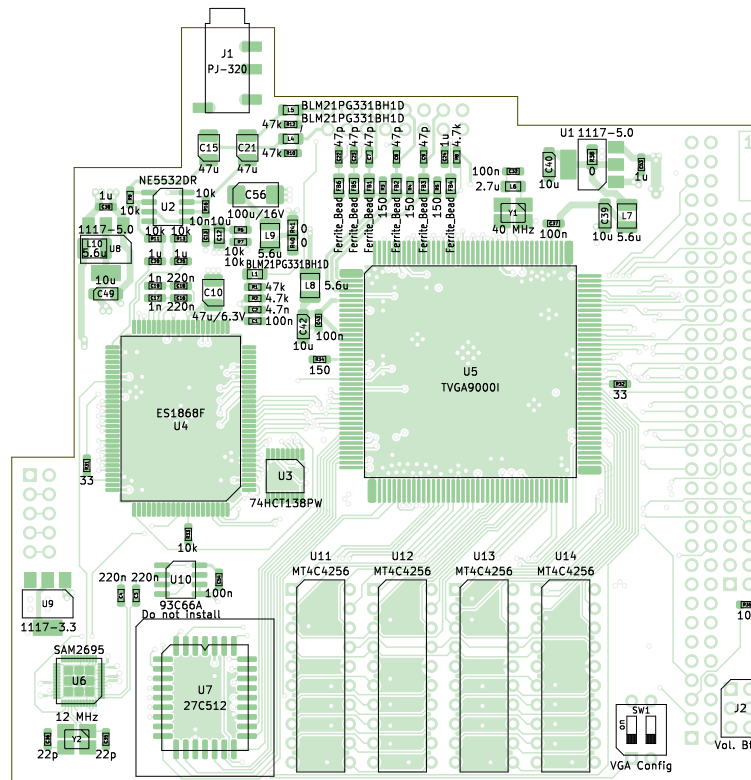
File: kharon386_top.kicad_sch

Title: PC-KHARON-386-TOP

Size: User	Date: 2023
------------	------------

Rev: A1





Layers: 4
Dimensions: 100x100mm
Thickness: 1.6mm
Min clearance: 0.2mm
Min track: 0.2mm
Min hole: 0.3mm
Min annular ring: 0.15mm

Eugene Lozovoy

Sheet:

File: kharon386_top.kicad_pcb

Title: PC-KHARON-386-TOP

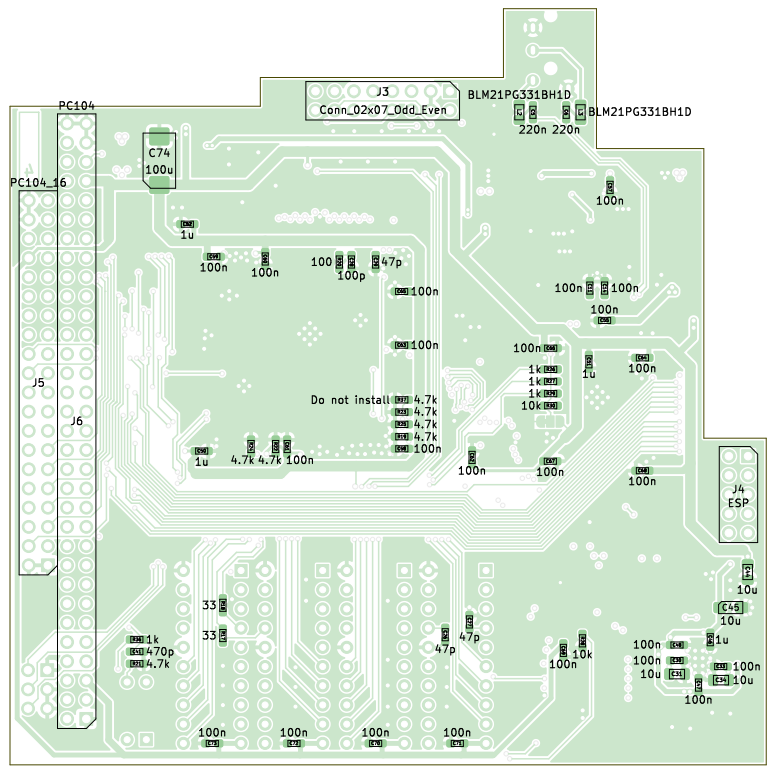
Size: A4

Date: 2023-02-22

Rev: A1

\${KICAD_VERSION}

Id: 1/1



Eugene Lozovoy

Sheet:
File: kharon386_top.kicad_pcb

Title: PC-KHARON-386-TOP

Size: A4 Date: 2023-02-22

\${KICAD_VERSION}

Rev: A1

Id: 1/1

Bill Of Materials

References	Value	Footprint	Qty
C1 C11 C14 C30 C32 C33 C37 C43 C47 C48 C54 C55 C57 C58 C59 C60 C61 C62 C63 C64 C65 C66 C67 C68 C69 C70 C71 C72 C73	100n	Capacitor_SMD:C_0603_1608Metric_Pad1.0 8x0.95mm_HandSolder	29
C10	47u/6.3V	Capacitor_Tantalum_SMD:CP_EIA-3528-21_ Kemet-B_Pad1.50x2.35mm_HandSolder	1
C12 C31 C34 C44	10u	Capacitor_SMD:C_0805_2012Metric_Pad1.1 8x1.45mm_HandSolder	4
C13	10n	Capacitor_SMD:C_0603_1608Metric_Pad1.0 8x0.95mm_HandSolder	1
C15 C21	47u	Capacitor_Tantalum_SMD:CP_EIA-3528-21_ Kemet-B_Pad1.50x2.35mm_HandSolder	2
C17 C19	1n	Capacitor_SMD:C_0603_1608Metric_Pad1.0 8x0.95mm_HandSolder	2
C2	4.7n	Capacitor_SMD:C_0603_1608Metric_Pad1.0 8x0.95mm_HandSolder	1
C20 C24 C25 C38 C46 C50 C51 C52 C53	1u	Capacitor_SMD:C_0603_1608Metric_Pad1.0 8x0.95mm_HandSolder	9
C28	100p	Capacitor_SMD:C_0603_1608Metric_Pad1.0 8x0.95mm_HandSolder	1
C16 C18 C3 C4 C5 C6	220n	Capacitor_SMD:C_0603_1608Metric_Pad1.0 8x0.95mm_HandSolder	6
C35 C36	22p	Capacitor_SMD:C_0603_1608Metric_Pad1.0 8x0.95mm_HandSolder	2
C39 C40 C42 C45 C49	10u	Capacitor_Tantalum_SMD:CP_EIA-3216-18_ Kemet-A_Pad1.58x1.35mm_HandSolder	5
C41	470p	Capacitor_SMD:C_0603_1608Metric_Pad1.0 8x0.95mm_HandSolder	1
C56	100u/16V	Capacitor_Tantalum_SMD:CP_EIA-6032-28_ Kemet-C_Pad2.25x2.35mm_HandSolder	1
C22 C23 C26 C27 C29 C7 C8 C9	47p	Capacitor_SMD:C_0603_1608Metric_Pad1.0 8x0.95mm_HandSolder	8
C74	100u	Capacitor_Tantalum_SMD:CP_EIA-7343-31_ Kemet-D_Pad2.25x2.55mm_HandSolder	1
FB1 FB2 FB3 FB4 FB5 FB6	Ferrite_Bead	Inductor_SMD:L_0805_2012Metric_Pad1.15 x1.40mm_HandSolder	6
J1	PJ-320	my:PJ-320A_D	1
J2	Vol. Btns	Connector_PinHeader_2.54mm:PinHeader_2 x03_P2.54mm_Vertical	1
J3	Conn_02x07_Odd_Even	Connector_PinHeader_2.54mm:PinHeader_2 x08_P2.54mm_Vertical	1
J4	ESP	Connector_PinSocket_2.54mm:PinSocket_2x 05_P2.54mm_Vertical	1
J5	PC104_16	Connector_PinHeader_2.54mm:PinHeader_2 x20_P2.54mm_Vertical	1
J6	PC104	Connector_PinHeader_2.54mm:PinHeader_2 x32_P2.54mm_Vertical	1

L1 L2 L3 L4 L5	BLM21PG331BH1D	Inductor_SMD:L_0805_2012Metric_Pad1.15 x1.40mm_HandSolder	5
L6	2.7u	Inductor_SMD:L_0805_2012Metric_Pad1.15 x1.40mm_HandSolder	1
L10 L7 L8 L9	5.6u	Inductor_SMD:L_1210_3225Metric_Pad1.42 x2.65mm_HandSolder	4
R1 R10 R12	47k	Resistor_SMD:R_0603_1608Metric_Pad0.98 x0.95mm_HandSolder	3
R17 R18 R31 R32	33	Resistor_SMD:R_0603_1608Metric_Pad0.98 x0.95mm_HandSolder	4
R19 R2 R21 R22 R23 R24 R25 R8	4.7k	Resistor_SMD:R_0603_1608Metric_Pad0.98 x0.95mm_HandSolder	8
R20	100	Resistor_SMD:R_0603_1608Metric_Pad0.98 x0.95mm_HandSolder	1
R26 R27 R29 R36	1k	Resistor_SMD:R_0603_1608Metric_Pad0.98 x0.95mm_HandSolder	4
R3 R34 R4 R5	150	Resistor_SMD:R_0603_1608Metric_Pad0.98 x0.95mm_HandSolder	4
R38 R40 R41	0	Resistor_SMD:R_0805_2012Metric_Pad1.20 x1.40mm_HandSolder	3
R11 R13 R16 R28 R30 R33 R35 R6 R7 R9	10k	Resistor_SMD:R_0603_1608Metric_Pad0.98 x0.95mm_HandSolder	10
SW1	VGA Config	Button_Switch_THT:SW_DIP_SPSTx02_Slid e_6.7x6.64mm_W7.62mm_P2.54mm_LowPr ofile	1
U1 U8	1117-5.0	Package_TO_SOT_SMD:SOT-223-3_TabPin 2	2
U11 U12 U13 U14	MT4C4256	Package_DIP:DIP-20_W7.62mm	4
U2	NE5532DR	Package_SO:SOIC-8_3.9x4.9mm_P1.27mm	1
U3	74HCT138PW	Package_SO:TSSOP-16_4.4x5mm_P0.65m m	1
U4	ES1868F	my:PQFP-100_14x20mm_P0.65mm_ESxxx	1
U5	TVGA9000I	my:PQFP-160_28x28mm_P0.65mm_LongPa ds	1
U6	SAM2695	Package_DFN_QFN:QFN-48-1EP_6x6mm_ P0.4mm_EP4.2x4.2mm	1
U7	27C512	my:PLCC-32_11.4x14.0mm_P1.27mm-longp ads	1
U9	1117-3.3	Package_TO_SOT_SMD:SOT-223-3_TabPin 2	1
Y1	40 MHz	Crystal:Crystal_SMD_SeikoEpson_TSX3225- 4Pin_3.2x2.5mm_HandSoldering	1
Y2	12 MHz	Crystal:Crystal_SMD_SeikoEpson_TSX3225- 4Pin_3.2x2.5mm_HandSoldering	1

